



OrthoCAD 2.9 Installation & Configuration Guide

This guide provides the basic information you need to install and configure the OrthoCAD system, download patient models, and begin working with the OrthoCAD software.

OrthoCAD Configurations	1	Starting OrthoCAD	4
System Requirements	2	Using View Control	5
Installing OrthoCAD	2	Context-Sensitive Help	5
Installing Appliance Catalog	2	Keyboard-Mouse Commands	5
Installing Downloader	3	Upgrading OrthoCAD	6
Running Downloader	3	Uninstalling OrthoCAD	6
Setting up Downloader & Storage Folder	4	Contact Cadent	6

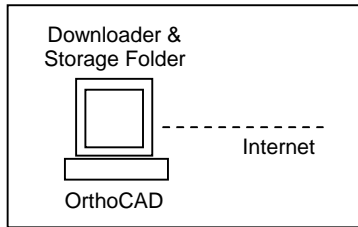
OrthoCAD Configurations

The OrthoCAD system can be installed in different configurations, depending on the needs of your office. Regardless of which configuration you use, the system will always contain the following three components:

- **OrthoCAD** – Application used to view, edit and approve patient models (installed on one or more PCs).
- **Downloader** – Utility used to retrieve patient models (installed on one PC **only**).
- **Storage Folder** – Directory used to store patient models (installed on one PC **only**).

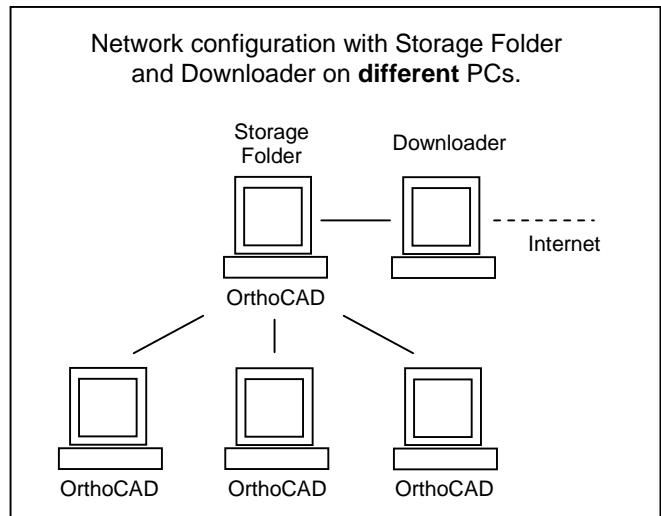
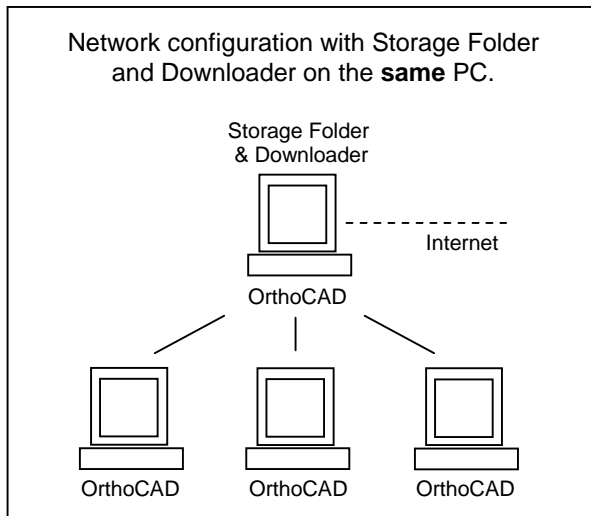
Single Station Configuration

All three components can be installed on the same PC for offices with a single OrthoCAD workstation:



Network Configurations

In all network configurations, the Storage Folder must be accessible (i.e., shared) to the Downloader utility and to each PC running the OrthoCAD software. Two examples of network configurations are shown below.



System Requirements

Before installing the OrthoCAD software, we recommend that you visit our website (www.orthocad.com) to view an updated list of the hardware and software requirements.

Installing OrthoCAD

- 1) **From CD** – Insert the “OrthoCAD Install CD” into the CD drive, wait for the CD menu to appear, and select “Install”. If the CD menu does not appear within 20 seconds, double-click “My Computer” on your desktop, double-click the CD drive, and then double-click the executable file (*.exe).
- 2) **From the Web** – Download the “Combo Software Package” from the OrthoCAD site (www.orthocad.com) and then double-click the install file on your local system.
- 3) During the installation you will be requested to respond to several questions as you proceed from screen to screen. The following installation parameters are recommended:

Location: C:\Program Files\Cadent\OrthoCAD
Backup Files – Choose “yes”

- 4) You will also be asked to select which components to install:

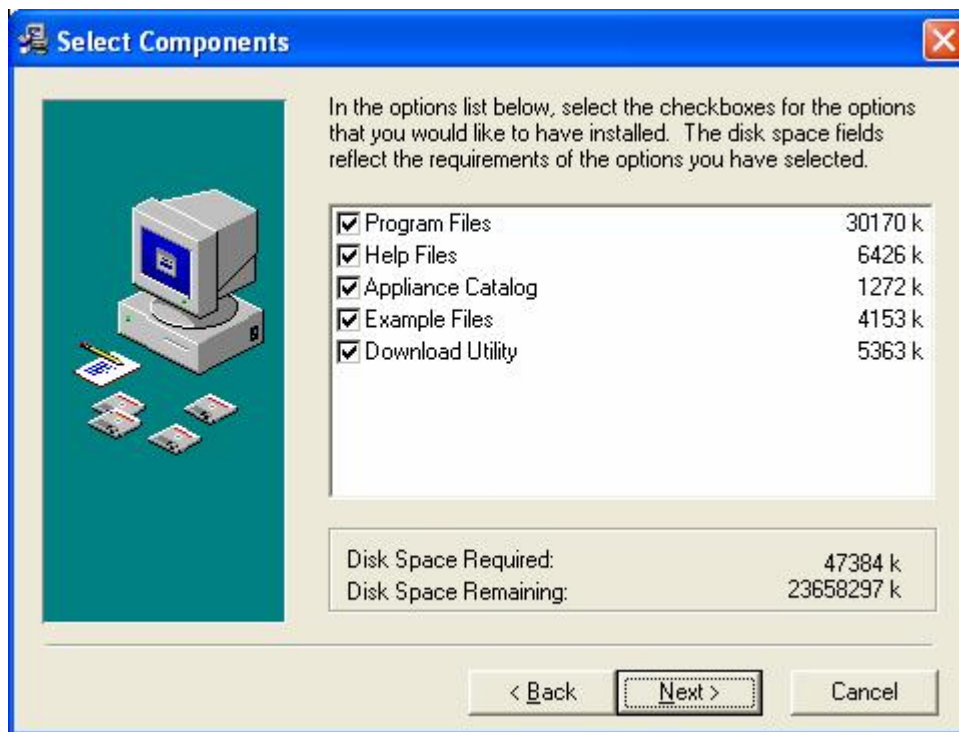
Program Files – To install the OrthCAD software.

Help Files – To install the help system.

Appliance Catalog – To install those appliance sets required for the Example Files. A full version of the appliance Catalog may be downloaded from the OrthoCAD website.

Example Files – To install sample models.

Download Utility – For the download station only (see the next section “Installing Downloader”).



- 5) Follow the installation wizard until the install is complete.

Installing Appliance Catalog

To install the full Appliance Catalog, open the “Downloads” section on OrthoCAD website (www.orthocad.com). Alternatively, you may call the OrthoCAD Support Center and request to have the latest Appliance Catalog downloaded to your Storage Folder.

Installing Downloader

The Downloader should be installed within your office on a single PC only. The PC on which you install the Downloader is designated as the “download station” and requires Internet access for downloading models.

- 1) To activate the Downloader, you need to obtain a Download.ini file containing a user code from the OrthoCAD Support Center.
- 2) If you received the Download.ini file on a floppy or a CD, insert it now in the relevant drive. If you received the file by e-mail, drag the file to your desktop before beginning the install process. After the installation is complete, the file may be deleted from your desktop.
- 3) Install OrthoCAD using the instructions in the previous section “Installing the OrthCAD Software” and this time check the “Download Utility” option.



Running Downloader

- 1) To start the Downloader utility from within OrthoCAD, open the File menu and select the “Download” command.
- 2) If you have installed the Downloader without installing the OrthoCAD software, you can start the Downloader by double-clicking the Downloader icon in the system tray. You can also start the Downloader by double-clicking the executable file: C:\OrthoCAD\Downloader\download.exe
- 3) If the Download.ini file is found, the Downloader utility is started (and you can skip to step 6 below).
- 4) If the Download.ini file is not found, the following message box appears on the screen.



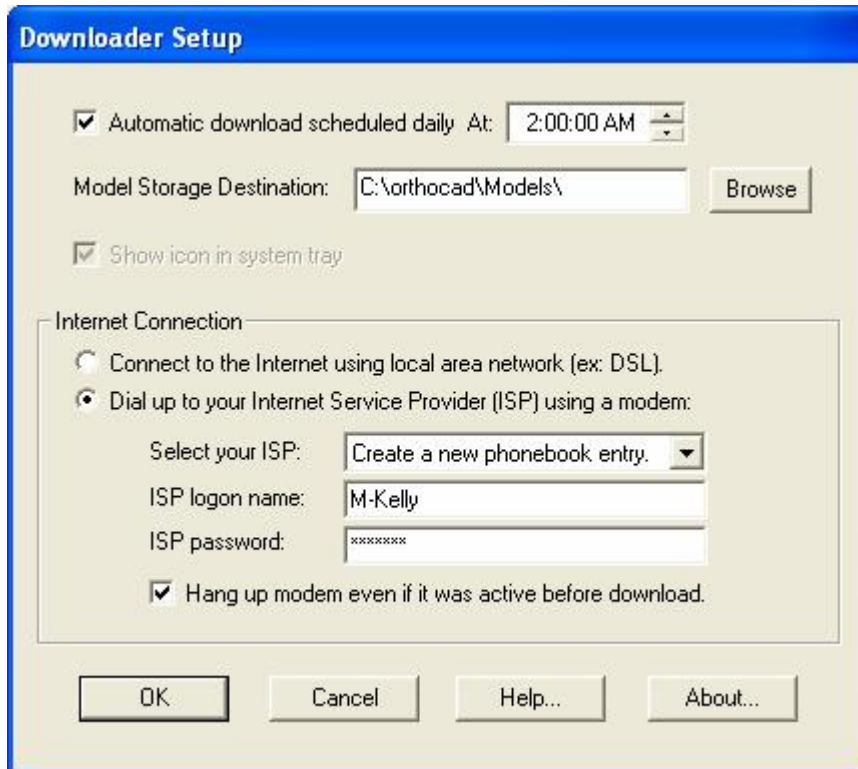
- 5) Browse until you locate the Download.ini file and then double-click it.
- 6) The system displays the OrthoCAD Downloader dialog.



- 7) Click the Setup button to configure the Downloader and Storage Folder as described below.

Setting up Downloader & Storage Folder

Use the Downloader Setup dialog to specify the daily time at which your models will be downloaded from the OrthoCAD lab, the folder in which the models will be stored, and other communication parameters.



Automatic Download Scheduled Daily

Check this option to specify a time for the daily download of your models (default 2:00 AM). Note that the download station should be left running at all times to ensure uninterrupted communications.

Model Storage Destination

Specify the Storage Folder where you want to store models. The Storage Folder can reside on the download station or elsewhere on your local area network (LAN).

NOTE: The Storage Folder must be shared to allow access from all computers on which the Downloader and OrthoCAD software are running. To do this, open the Windows Explorer, right-click on the Storage Folder, select “Properties”, and then verify that the “Read Only” option is unchecked and that the folder is fully shared.

Internet Connection

Connect to the Internet using LAN – Check this option if you have a broadband connection (xDSL, Cable, Tx).

Dial up to your ISP using a modem – Check this option if you have a modem connection.

Select your ISP – Choose the Internet Service Provider you intend to use for downloading models.

ISP logon name – Enter your user name for connecting to the ISP (this is not your email address).

ISP password – Enter your password for connecting to the ISP.

Hang up modem even if it was active before download – Closes modem connection after download of files.

Starting OrthoCAD

Once you have completed the installation process, proceed as follows:

- 1) Double-click the OrthoCAD icon on desktop (or select “Start/Programs/OrthoCAD 3D Modeling/OrthoCAD”).
- 2) Select the “Open” command in the File menu. The Open dialog appears.
- 3) Use the Open dialog to browse to your Storage Folder and display its contents.
- 4) Double-click the model you wish to open.

Using View Control

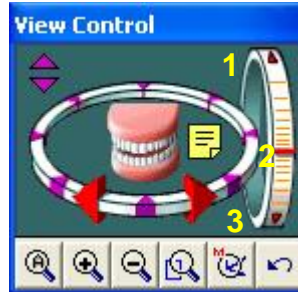
The View Control can be used to manipulate the model displayed in the 3D graphic window. Clicking with the left mouse button affects the active window only. Clicking with the right mouse button affects all graphic windows. Clicking any of the rotational commands redisplay the model at its default size.

Horizontal Rotation



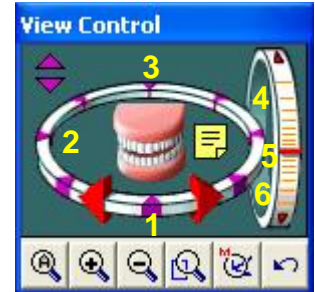
- 1) Rotate right
- 2) Horizontal center
- 3) Rotate left

Vertical Rotation



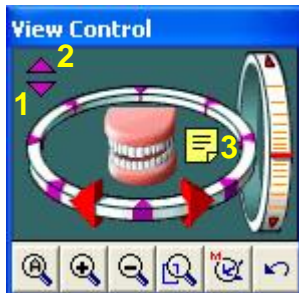
- 1) Rotate up
- 2) Vertical center
- 3) Rotate down

Fixed Positions



- 1-3) Fixed horizontal positions
- 4-6) Fixed vertical positions

Jaws & Notes



- 1) Open jaw
- 2) Close jaw
- 3) Hide/display notes

Maxilla/Mandible



- SINGLE CLICK:
- 1) Hide/display maxilla
 - 2) Hide/display mandible
- DOUBLE CLICK:
- 1) Maxilla occlusal
 - 2) Mandible occlusal

Button Commands



- 1) Zoom all
- 2) Zoom in
- 3) Zoom out
- 4) Zoom region
- 5) Rotate
- 6) Undo

Context-Sensitive Help

Click on the View Control dialog and press the F1 key to display more detailed instructions.

Keyboard-Mouse Commands

For all OrthoCAD tools:

Zoom region	SHIFT and drag mouse.
Rotate model	ALT and drag mouse.
Rotate with arrow keys	Click in graphic window and press arrow keys (← ↑ ↓ →).
Pan with keyboard & mouse	ALT & SHIFT and drag mouse.
Pan with mouse only	Hold down middle & right mouse buttons and drag mouse.

For Touch-Up and Virtual Set-Up tools only:

Select a tooth	Click tooth with mouse.
Select several teeth	CTRL + click each tooth with mouse.
Select all teeth	CTRL + A (or right click in 3D graphic window and choose Select all teeth command.)
Undo tooth selection	Press ESC or click to the side of the model

Upgrading OrthoCAD

Automatic Upgrade

When a new version of OrthoCAD becomes available, an upgrade file is automatically downloaded to your Storage Folder. Each time OrthoCAD is reentered on one of your office PCs, a comparison is made against the upgrade file. If the upgrade version is newer, you will be asked to confirm an upgrade for that PC only. Performing an upgrade will not have any affect on your existing patient models.

Manual Upgrade

To initiate a software upgrade from within the OrthoCAD software, open the Help menu, choose the “Upgrade” command, and then select one of the following options:

- **Local** – To upgrade from your local network (if you already have the upgrade file).
- **Web** – To upgrade from the OrthoCAD website.

Uninstalling OrthoCAD

To uninstall the OrthoCAD software, use the standard Windows uninstall procedure:

- 1) Click the “Start” button.
- 2) Select “Settings”.
- 3) Select “Control Panel”.
- 4) Double-click the “Add or Remove Programs” icon.
- 5) Select OrthoCAD in the program list, click the “Change/Remove” button, and follow the instructions until the uninstall completes.

Contact Cadent

Cadent, Inc.
640 Gotham Parkway
Carlstadt, NJ 07072-2405 USA

Toll-Free Phone: 800-577-8767

Toll-Free Fax: 866-943-7466

support@orthocad.com – technical & service inquiries

sales@orthocad.com – sales & marketing inquiries

info@orthocad.com – general inquiries

Visit our website at www.orthocad.com